

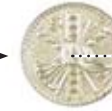
# COLLAR ORNAMENTS

Frame + Insert = Collar Ornament

(title)



3324



2756



## SAMPLE COLLAR ORNAMENTS

- Custom colors available  
Can be used as:
- Collar Ornament
  - Lapel Pin
  - Tie Tack
  - Badge Seal
  - Nameplate Seal

Any insert (page 34 and 37) or small state seal (page 30) may be applied to any Collar Ornament frame for endless combinations.



3324 with 2756 insert



3599 (insert 2756)



3408 (insert 3303)



3272 (insert 2761)



9964 (insert 5277)



5039 (insert 2451)

## COLLAR ORNAMENT TITLES AND ORDER NUMBERS

Administrative • Officer . . . . . 4468	Company • Officer . . . . . 6863	Firefighter • Paramedic . . . . . 9765	President . . . . . 4107
Admin. Officer • Fire Dept. . . . . 4464	Deputy • Chief . . . . . 3271	Fire • Marshal . . . . . 4651	President • Fire Dept. . . . . 4457
Advanced • E.M.T. . . . . 5949	Deputy • Fire Marshal . . . . . 7931	Fire • Photographer . . . . . 5582	Private . . . . . 3409
Air-crash • Fire-Rescue . . . . . 7384	Director . . . . . 4111	Fire • Police . . . . . 5398	Private • Fire Dept. . . . . 4675
Ambulance • Service . . . . . 3329	Director • Fire Dept. . . . . 4462	Fire • Prevention . . . . . 5288	Rescue • Captain . . . . . 10474
Ambulance • Squad . . . . . 3328	Dispatcher • Fire Dept. . . . . 4674	First Aid • Squad . . . . . 3334	Rescue • Lieutenant . . . . . 10476
Asst. • Chief . . . . . 3272	District Chief . . . . . 3323	First • Aid . . . . . 3330	Rescue • Paramedic . . . . . 10475
Assistant • Chief . . . . . 3406	Division Chief . . . . . 8139	First • Asst. Chief . . . . . 4620	Rescue • Squad . . . . . 3327
Assistant • Fire Marshal . . . . . 5287	Driver • Fire Dept. . . . . 4451	First Responder . . . . . 11108	Reserve • Captain . . . . . 5566
Attorney . . . . . 4467	Electrician . . . . . 4466	General Dynamics . . . . . 7302	Reserve • Fire Fighter . . . . . 5682
Attorney • Fire Dept. . . . . 4463	Electrician • Fire Dept. . . . . 4461	Honor • Guard . . . . . 8906	Retired (engraveable) . . . . . 6890
Auxiliary . . . . . 11899	Emergency • First Responder . . . . . 7500	Honorary Captain • Fire Dept. . . . . 5593	Safety • Officer . . . . . 9369
Auxiliary • Fire Dept. . . . . 3333	Emergency • Ambulance Service . . . . . 5551	Honorary • Chief . . . . . 5248	Search Rescue . . . . . 10287
Band • Fire Dept. . . . . 4590	Emergency Management . . . . . 10972	Honorary • Deputy Chief . . . . . 5275	Sergeant . . . . . 3408
Battalion • Chief . . . . . 3322	Emergency • Medical Services . . . . . 5291	Honorary • Member . . . . . 6545	Sergeant • Fire Dept. . . . . 3275
Cadet . . . . . 9542	Emergency • Medical Technician . . . . . 5278	Inspector • Fire Dept. . . . . 4143	Second • Asst. Chief . . . . . 4621
Captain . . . . . 3433	Emergency Service . . . . . 3331	Jr. Fireman • Fire Dept. . . . . 6983	Secretary . . . . . 4108
Captain • Engine Co. . . . . 4622	Emergency • Response Team . . . . . 11287	Ladder • Company . . . . . 3326	Secretary • Fire Dept. . . . . 4459
Captain • Fire Dept. . . . . 3273	E.M.T. Intermediate . . . . . 10465	Lead • Inspector . . . . . 8999	Senior • Inspector . . . . . 5680
Captain • Fire Police . . . . . 5397	E.M.T. Paramedic . . . . . 6440	Lieut • Fire Dept . . . . . 3274	Senior • Firefighter . . . . . 5681
Captain • Hook & Ladder . . . . . 4626	Engine Company . . . . . 3325	Lieutenant . . . . . 3407	Snorkel • Company . . . . . 4637
Captain • Hose Co. . . . . 4623	Engineer • E.M.T . . . . . 8333	Lieutenant • Engine Co. . . . . 4624	Station • Chief . . . . . 7991
Cardiac Rescue Technician . . . . . 10488	Engineer • Fire Dept . . . . . 4452	Lieutenant • Hook & Ladder . . . . . 4627	State Fire • Instructor . . . . . 6043
Certified • Fire Fighter . . . . . 5628	Ex • Chief . . . . . 4169	Lieutenant • Hose Co. . . . . 4625	Supervisor • Inspector . . . . . 5679
Certified • Fire Inspector . . . . . 7007	Fire Alarm • Supt. . . . . 4089	Life Member . . . . . 4470	Tactical • Unit . . . . . 6469
Chaplain . . . . . 4469	Fire Brigade . . . . . 4556	Life Member • Fire Dept. . . . . 4465	Technician • Fire Dept. . . . . 5247
Chaplain • Fire Co. . . . . 4365	Fire • Commissioner . . . . . 7540	Master • Firefighter . . . . . 8167	Training • Coordinator . . . . . 6511
Chaplain • Fire Dept. . . . . 4364	Fire • Company . . . . . 10332	Mechanic • Fire Dept. . . . . 6185	Training • Instructor . . . . . 4565
Charter Member • Tems . . . . . 6892	Fire • Coordinator . . . . . 3394	Member • Fire Dept. . . . . 5060	Training • Officer . . . . . 3395
Chief . . . . . 3405	Fire • Dept . . . . . 3324	Paramedic • Fire Dept . . . . . 6487	Treasurer . . . . . 4109
Chief • Engineer . . . . . 4453	Fire • Medic . . . . . 11264	Paramedic • Rescue . . . . . 4462	Treasurer • Fire Dept. . . . . 4460
Chief • Fire Dept . . . . . 3269	Fire • Rescue . . . . . 10340	Paramedic • Firefighter . . . . . 9964	Vice President . . . . . 4112
Civilian • Defense . . . . . 6591	Firefighter . . . . . 3599	Past Captain . . . . . 10782	Vice President • Fire Dept. . . . . 4458
Commissioner • Fire Dept. . . . . 4587	Firefighter • II . . . . . 7714	Past Chief • Fire Dept. . . . . 5039	Volunteer • Fire Dept. . . . . 3332
Commissioner • Fire Dist. . . . . 5910	Firefighter • III . . . . . 7715	Past Pres. . . . . 4388	Volunteer Firefighter . . . . . 10660
Communications . . . . . 5289	Firefighter • EMT . . . . . 8332	Past Pres. • Ladies Aux. . . . . 7908	